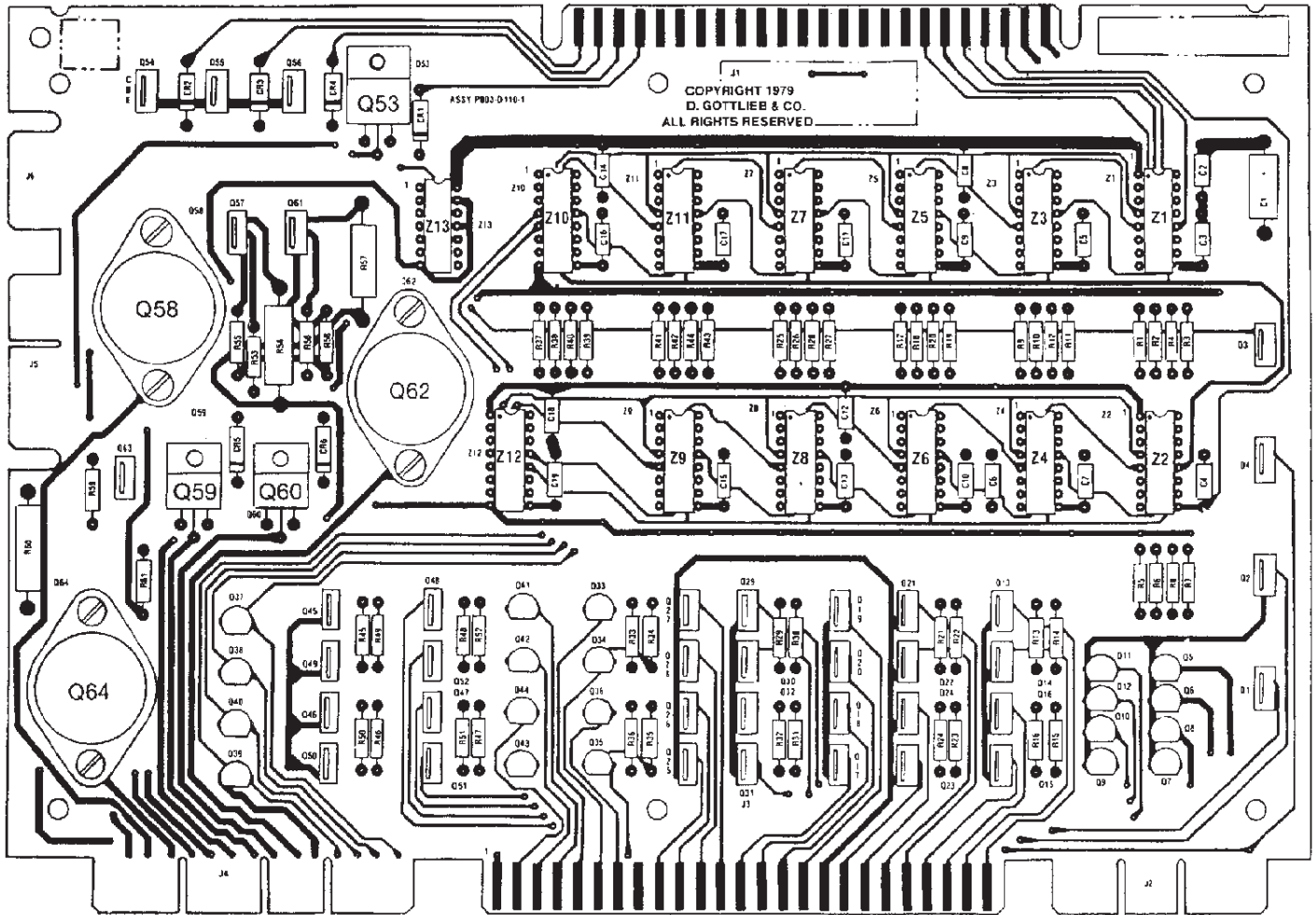


## A3 DRIVER BOARD COMPONENT LOCATION

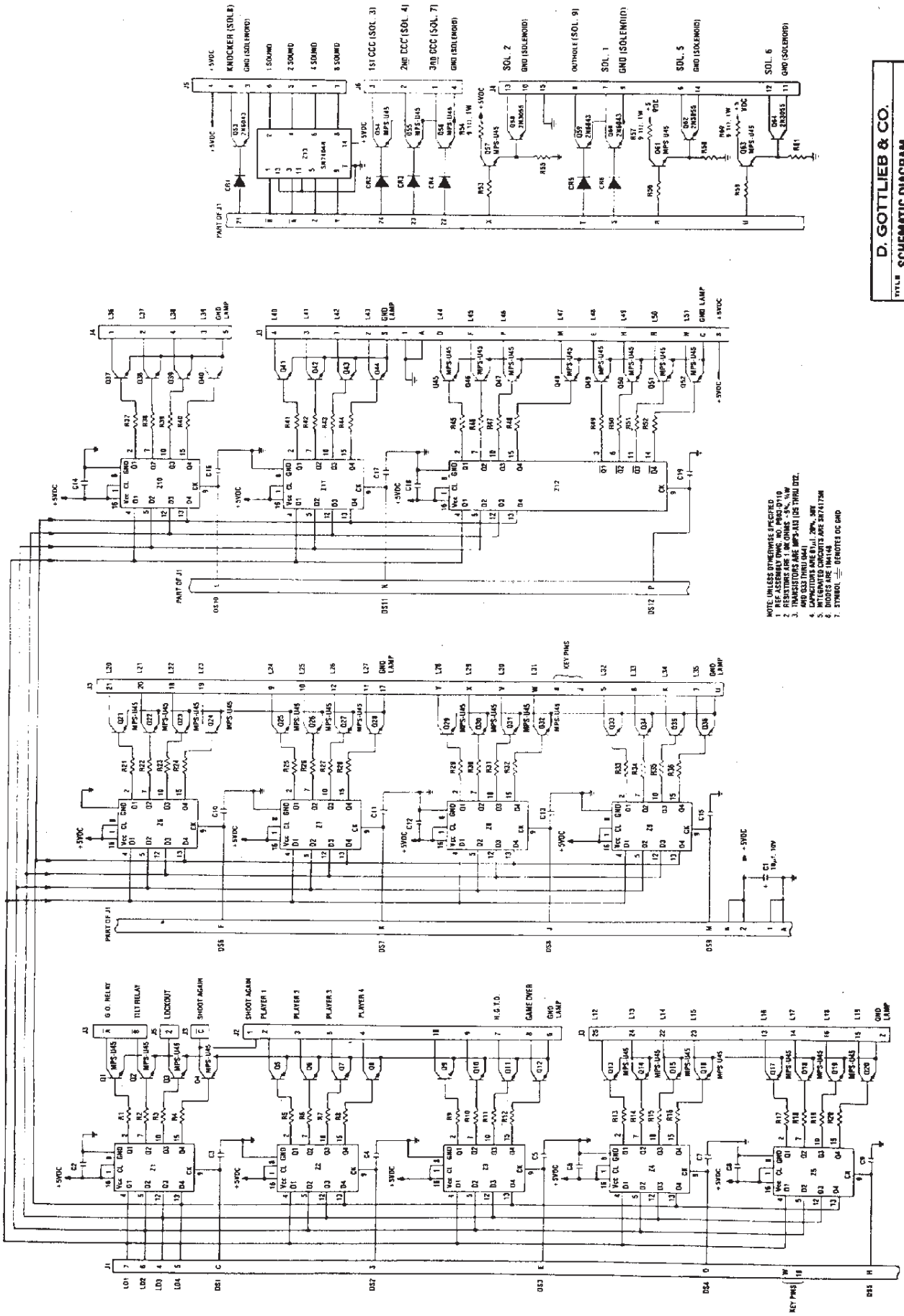


<b>D. GOTTLIEB &amp; CO.</b>	
TITLE	<b>MASTER DRIVER SYSTEM 80</b>
USED ON	
DRAWN	APPROVED DATE
	<b>PB03-D110</b>

### MASTER DRIVER BOARD

PART NUMBER	DESCRIPTION
43-03-4	INSULATOR—THERMALLOY
2N6043	TRANSISTOR—NPN—(Q53, Q59, Q60)
2N3055	TRANSISTOR—NPN—(Q58, Q62, Q64)
MPS-U45	TRANSISTOR—NPN—(Q1-Q4, Q13-Q32, Q45-Q52, Q54-Q57, Q63)
MPS-A13	TRANSISTOR—NPN—(Q5-Q12, Q33-Q44)
SN74175N	IC—QUAD "D" FLIP-FLOP—(Z1-Z12)
SN7404N	IC—HEX INVERTER—(Z13)
1N4148	DIODE—SILICON—(CR1-CR6)
	CAPACITOR—.01 MICROFARAD, 50V—(C2-C19)
	CAPACITOR—10 MICROFARAD, 10V—TANTALUM—(C1)
	RESISTOR—1000Ω, 1/4W, 5%—(R1-R53, R61, R55, R56, R58, R59)
	RESISTOR—9.1Ω, 1W, 5%—(R54, R57, R60)

# A3 DRIVER BOARD SCHEMATIC



- NOTES: UNLESS OTHERWISE SPECIFIED  
 1. REF. ASSEMBLY DRAWING NO. P803-110  
 2. RESISTORS ARE 1/4W OHMS - 5%, 1/8W  
 3. TRANSISTORS ARE MPS-445 (DS THRU DSZ)  
 4. CAPACITORS ARE 0.1µF, 20%, 50V  
 5. INTERPATED CIRCUITS ARE 38716A, 38717A  
 6. DIODES ARE 1N4148  
 7. SYMBOL ≡ DENOTES DC GND

<b>D. GOTTLIEB &amp; CO.</b>	
<b>SCHEMATIC DIAGRAM—</b>	
<b>USED ON MASTER DRIVER SYSTEM 80</b>	
DRAWN	APPROVED DATE
<b>P803-X111</b>	